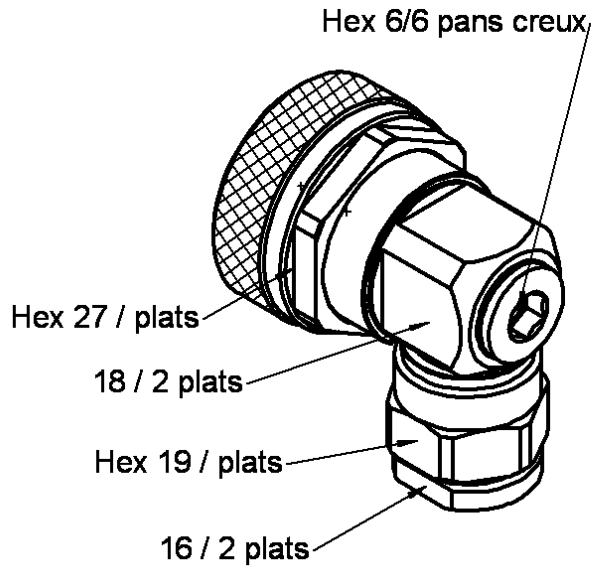
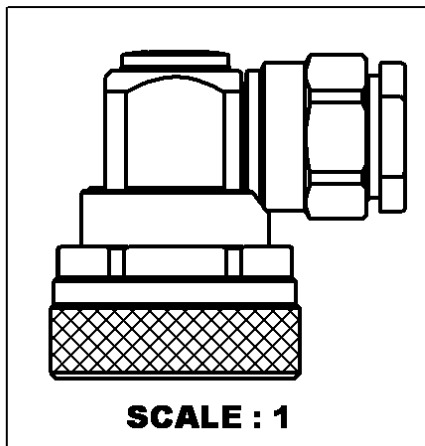
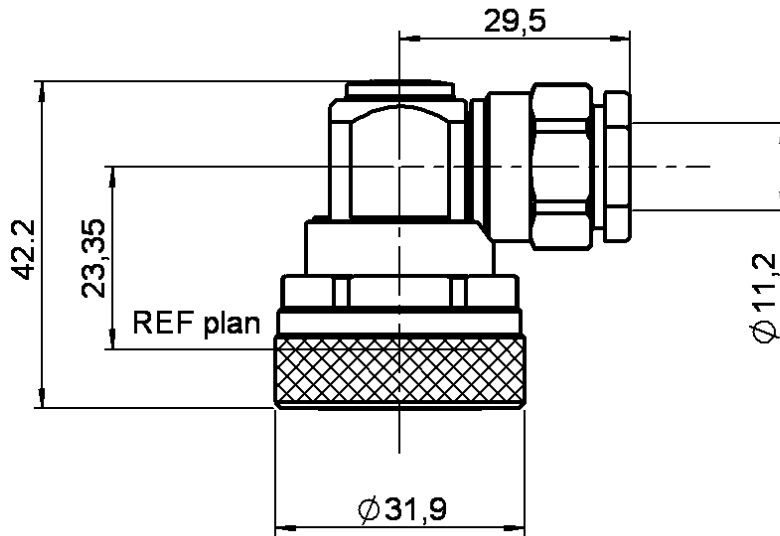


RIGHT ANGLE PLUG CLAMP TYPE

R185.160.000

CABLE 10+11/50

Series : 7-16



All dimensions are in mm.



COMPONENTS	MATERIALS	PLATINGS (µm)
BODY	BRASS	BBR 0.5 OVER SILVER 3
CENTER CONTACT	BRASS	SILVER 5 OVER COPPER 0.5
OUTER CONTACT	BRASS	SILVER 5 OVER COPPER 0.5
INSULATOR	PTFE	
GASKET	SILICONE RUBBER	
OTHERS PARTS	BRASS	BBR 2
-	-	-
-	-	-

Issue : 0039 G

In the effort to improve our products, we reserve the right to make changes judged to be necessary.



RIGHT ANGLE PLUG CLAMP TYPE

R185.160.000

CABLE 10+11/50

Series : 7-16

PACKAGING

Standard	Unit	Other
20	'W' option	Contact us

SPECIFICATION

ELECTRICAL CHARACTERISTICS

Impedance		50 Ω
Frequency		0-7.5 GHz
VSWR	* +	0.000 x F(GHz) Maxi
Insertion loss		0.05 √F(GHz) dB Maxi
RF leakage	- (95 - F(GHz)) dB mini
Voltage rating		1400 Veff Maxi
Dielectric withstanding voltage		2700 Veff mini
Insulation resistance		10000 MΩ mini

CABLE ASSEMBLY

Stripping	a	b	c	d	e	f
mm	3.00	13.0	0.00	0.00	8.00	0.00

Assembly instruction :

Recommended cable(s)

RG 213

KX 4

RG 214

RG 225

KX 13

MECHANICAL CHARACTERISTICS

Center contact retention		
Axial force – Mating end		200 N mini
Axial force – Opposite end		100 N mini
Torque		2 N.cm mini

Cable retention

- pull off

250 N mini

- torque

NA N.cm

TOOLING

Part Number	Description	Hexagon
.	.	.

Recommended torque

Mating		3000 N.cm
Panel nut		NA N.cm
Clamp nut		800 N.cm
A/F clamp nut		16.000 mm

OTHERS CHARACTERISTICS

* ROS : 1.15 a 3 GHz

Mating life		500 Cycles mini
Weight		131.400 g

ENVIRONMENTAL

Operating temperature		-55/+155 °C
Hermetic seal		NA Atm.cm3/s
Panel leakage		NA

Issue : 0039 G

In the effort to improve our products, we reserve the right to make changes judged to be necessary.



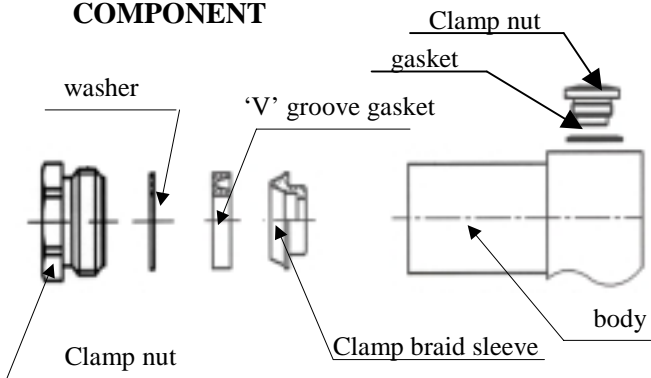
RIGHT ANGLE PLUG CLAMP TYPE

R185.160.000

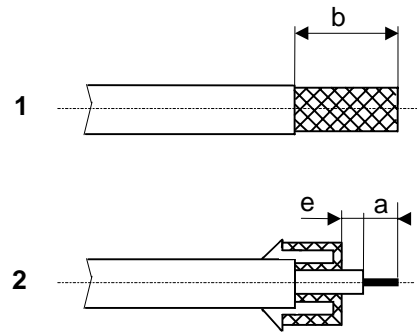
CABLE 10+11/50

Series : 7-16

COMPONENT

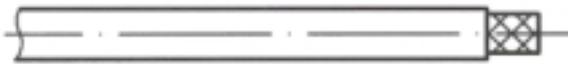


STRIPPING DIMENSIONS



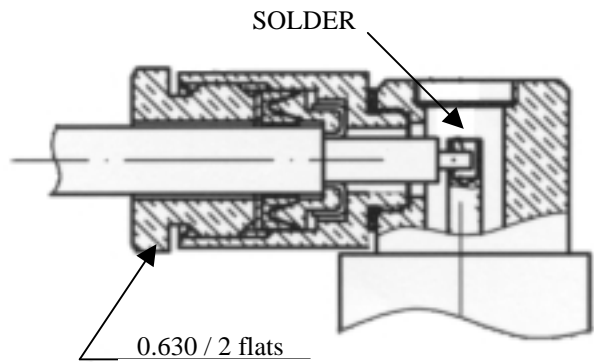
1

Strip the cable .



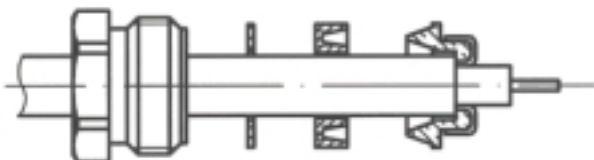
3

Screw sub-assembly into the connector body .
(recommended coupling torque : 70.87 in.lb)



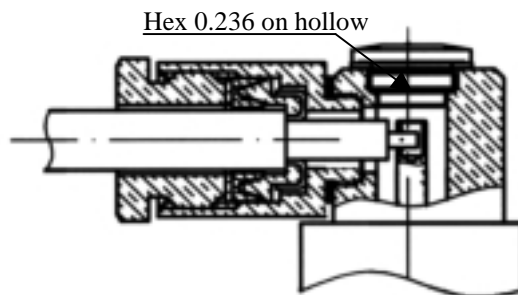
2

Slide the clamp nut and the "V" groove gasket onto the cable
Slide clamp braid sleeve over braid . .
Fold back braid and trim off surplus braid . .
Trim back dielectric as shown . .



4

Tightly screw the cap with gasket onto connector body



Issue : 0039 G

In the effort to improve our products, we reserve the right to make changes judged to be necessary.

